



Newsletter

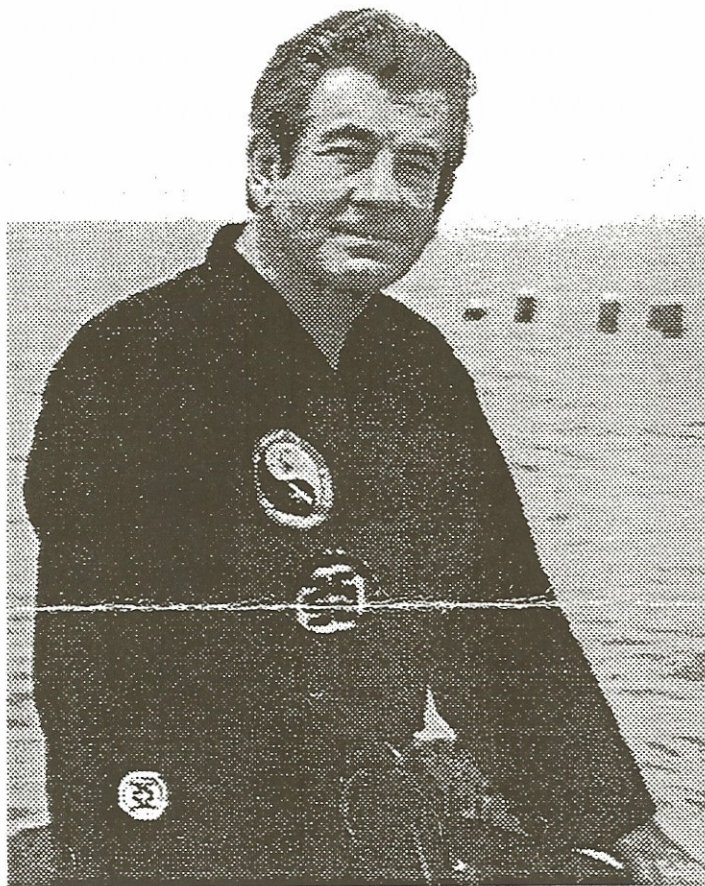
March 1994

The Passing of Shihan

Concerning the passing of the Shihan, each of us has our private and separate grief to bear. I am frustrated because I cannot shoulder the burden of my sensei's family, which only they must do. (Donna Foster, not only sensei's wife but his wonderful partner in life and our blessing as well, proved herself worthy of any shodan rank I've ever seen earned on the "field of battle.") Though he was, for me and for many others, a second father, I cannot experience the loss felt by David and Billy, Danny and Scott. And, though I saw him privately as often as I could, I cannot share even the weekly heart-wrenching reminder of his absence experienced by those in his KYF class. Instead, I have the luxury of holding my own private grief at bay until it sneaks up on me at irregular and unexpected times.

Though all those who were close to him experience the same great change in their lives, each of us, though united by a common loss and love, is alone. For each of us who knew him -- as sensei, as father, brother, husband, friend -- he was, to us, a link to something deep within us . . . something wonderfully private and ours alone. We were drawn to him out of a private need but stayed because of what we'd become by being near him. The beauty of his influence is that we remain only and intensely ourselves. Rather than try to mold us to his desire or some common standard (except that of pushing our boundaries), he somehow brought out what was best in each of us. Therefor, when we think of him, we are inevitably in touch with the best part of ourselves, a part that few others ever fully know but which we're continually challenged to realize and express.

Even if we could have told him adequately, the master himself would have been embarrassed, humbled by what he meant to us. The fact was that we could not have told him. Those things that mean the most to us are forever



Shihan Foster

May the Eternal Spirit grant you peace.

mysterious and unworded. Poetry is that which is lost in translation because, as one poet said, the real message lives between the lines, within the "secret unworded inside of things," and love is like that.

The path he taught us is one traveled by many and has many lanes. It is not sole and exclusive, does not admit of only one dogma; in fact, it is without dogma. His "way" was not about being "right" but about "magnanimity"-- generosity of spirit and nobility of mind. As a result, we all are linked, as he told me several times, not by a common set of kata or identical system of techniques, but by common values and, yes, even articles of faith. Though I have my own mental list, as the new director, I am calling on you who knew him to share with me ideas and feelings that the shihan communicated to you or that you understood him to say. Eventually, I want us to articulate, for posterity and for ourselves, those values and guidelines he'd have wanted us to be directed by. I ask the senseis across the country (many of whom have had to create their own guidelines in the absence of an immediate mentor) -- and those students, especially at the KYF, who had direct contact with him -- to communicate to me (in writing, audio tape, personal conversation or by phone) your understanding of the

shihan's ideas and beliefs.

For the purpose of maintaining continuity of "vision" and a living connection with our master, I would like a regular section of our semi annual newsletter to be dedicated to Rev. William H. Foster -- whom many of us knew as "sensei" and more as "shihan" and whom future generations will know as the beloved "Founder" of the Yin Yang Do Karate Association. I would like each of you who can to write or tape a personal piece about the shihan so that we might include many of these in the newsletters of the future, both to keep our vision alive and to teach those who never knew him.

My mission, on behalf of you, the members of the Yin Yang Do, is to do my best to remain true to the master's teachings and to further and preserve an association he spent much of his life building and believing in. In this effort, especially within the coming year, I would appreciate your support and advice. I am here to try to answer your needs and to maintain the interconnectedness among association schools. The master passed on to us the idea, as I always tell outsiders, of both the dojo and the association as not only a club bound together for mutual benefit . . . but a "family" united by commitment and trust -- something far beyond the mere utility that binds, for the time being, other groups. Whatever new proposals, if any, I might make in the future will be consistent with these ideas.

In our "experience" of the master (read "father," "friend," "sensei," etc.), we must feel an incredible loss at his passing from our midst, even if we hadn't personally known him. On the other hand, we must, if we are to be true to his spirit (he who really believed in the "eternal spirit"), rejoice in what he left us with -- a richer, deeper sense of ourselves than we otherwise would have known . . . and a hand indicating the path we can follow toward a more elevated and rewarding life and a power that will sustain us in peace as well as in battle. From now on, when we bow to the east, to all the great senseis to whom we owe so much, we remember him.

May the Eternal Spirit grant you peace.

Lynn Philyaw



Shihan's Foster's Wishes and Directives for the Future Administrative Positions for the Association.

Before Shihan Foster passed away on Monday, January 17, 1994, he made his wishes clear to the visiting yudanshas on Tuesday evening January 11th, 1994 in his home.

These same wishes were conveyed by him in a preliminary meeting at the K.Y.F. in Kenosha, WI in October of 1993.

The following people would occupy these positions in the Association: Secretary/Treasurer - Al Ferguson, Vice-President - Al Gomez, President - Dick Bruno, Chief Instructor - Billy Foster, and Shihan - Lynn Philyaw

These positions shall be reviewed in July of 1995 by the board of Yudanshas (Yodan and above) to determine if these people shall continue to hold these offices.

After the board decides who shall fill these offices (either the same people or different people) the positions shall not be reviewed again unless the board deems necessary in the future. The position of Shihan shall be permanent following such a review.

Dick Bruno



Shihan Foster Memorial Issue

The spring newsletter will be dedicated to Shihan Foster. Please send articles to me by May 18, 1994. If possible please type your article. For submission via computer, you can send articles on a 3 1/2 inch disk using Microsoft Word, Word Perfect or a text file. Electronically you may reach me on [America Online](#) at -



A Call for Donations

For 25 years Shihan Foster never asked us for anything other than hard work. I consider it our responsibility to contribute whatever we are able to in helping to defray considerable funeral expenses. Donna, Shihans widow, could certainly use any help we as a family can provide. A check will be presented to Donna when the majority of contributions have been received. Please make your check out to - Yin Yang Do Karate Association and send to:
Al Ferguson

